



SmartPlug Products

30_{AMP} & **50_{AMP}**
125V 125/250V

SAFE - ELIMINATES OVERHEATING

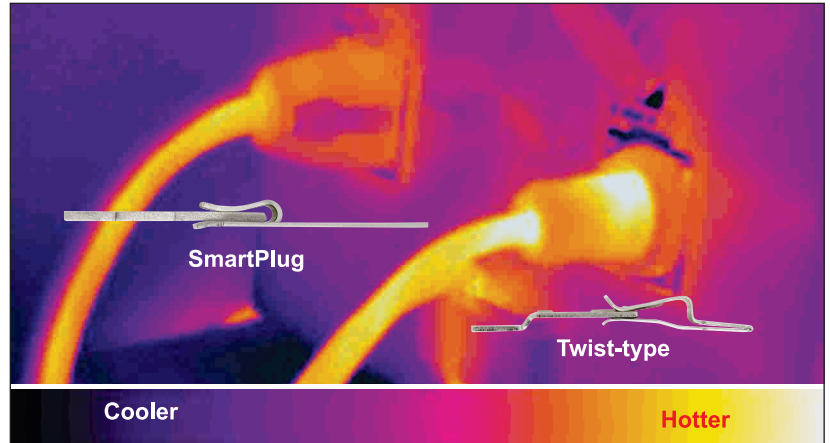
- 20x more electrical contact area than the standard twist-type connector
- Multi-point Locking System - Side Levers & Cover Lock
- Solid Sleeve Connection - Eliminates Pressure on Pins/Clips
- Triple Weatherproof Seals (stays nice & dry)

EASY TO USE

- No L-Shaped Pin - Easy to Use at Night
- Plugs Straight In - No Twisting Required
- Blue LED Power Indicator

QUALITY

- 7 Year Warranty - Only Shore Power Product That Offers Extended Warranty
- SmartPlug Offers No-Hassle Product Warranty Program



30 AMP CONNECTOR & INLET DETAILS

LED POWER INDICATOR

Two blue LEDs illuminate to illustrate an active power source

LOCKING FEATURE

Inlet cover snaps onto back of connector

WEATHERPROOF

Face gasket seals

EASY INSTALLATION

Industry standard hole pattern fits your existing inlet hole pattern

ELECTRICAL PINS

Straight pins with 20X surface area. No twisting required!

LOCKING FEATURE

Side locking levers snap into sides of inlet housing.

CONNECTOR BODY SHAPE

Sleeve design fits snugly within inlet, removing all tension from pins & clips.

WEATHERPROOF

Face gasket seals against inlet sleeve to eliminate dirt & moisture exposure on electrical pins.

EASE OF USE

Unique plug body shape that only goes in the right way! Easy to orient with no chance of misalignment - even in the dark! Plug pushes straight in & locks automatically.



SmartPlug Systems, LLC
www.smartplug.com



Proven Performance



SUPERFLEX50

EASY TO ROLL UP IN COLD & WARM WEATHER!

SUPERFLEX50 - Rated for -58 degrees F to +220 degrees F. Outer cable jacket is Seoprene Thermoplastic Elastomer (TPE). The TPE jacket along with stranded bare copper conductors, makes SUPERFLEX50 the best combination of flexibility & durability.


- *Coils tightly in cold or warm weather*
- *Stows easily & remains flexible*
- *Standard Dockside Connector*

MALE INLET CONNECTORS - BOAT SIDE / 30A - 125V & 50A - 125/250V

Amps	Stainless	Non-Metallic White	Non-Metallic Gray	Non-Metallic Black
30	BM30NT	BM30PW	BM30PG	BM30PB
50	BM50S	BM50PW	BM50PG	BM50PB
				


FEMALE RETRO FIT CONNECTORS / 30A - 125V & 50A - 125/250V

Amps	Part Number	Description
30	BF30	Female Connector Assembly
50	BF50	Female Connector Assembly



COMBO KITS - CONNECTORS & INLETS / 30A - 125V & 50A - 125/250V

Amps	Stainless	Non-Metallic White	Non-Metallic Gray	Non-Metallic Black
30	B30ASSYNT	B30ASSYPW	B30ASSYPG	B30ASSYPB
50	B50ASSY	B50ASSYPW	B50ASSYPG	B50ASSYPB



COMBO KITS - CORDSETS & INLETS / 30A - 125V & 50A - 125/250V

Amps	Stainless	Non-Metallic White	Non-Metallic Gray	Non-Metallic Black
30	C30503BM30NT	C30503BM30PW	C30503BM30PG	C30503BM30PB
				
50	C50304BM50S			
				

SUPERFLEX50 - Highly Flexible Cord

CORD SETS - DUAL CONFIGURATION / 30A - 125V & 50A - 125/250V

Amps	Part Number	Amps	Part Number
30	C30503	50	C50304
			

SUPERFLEX50
Very Flexible Cord

ACCESSORIES

Part Number	Description
A1001	Weatherproof Cover for 30A & 50A Connectors
BDCOAX	TV / Internet Connector
CB001	30 Amp Power Cord Carry Bag

